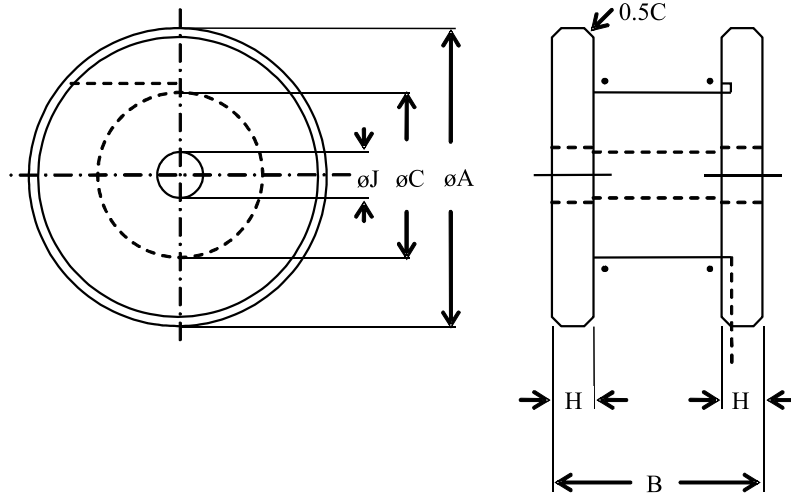


Large Bobbin Cores



Type	ϕA	B	ϕC	H	ϕJ
BB-22 x 14	22.8 ± 0.4	14.0 ± 0.35	13.0 ± 0.25	3.0 ± 0.2	5.3 ± 0.2
BB-23 x 15	23 ± 0.4	15 ± 0.4	13.0 ± 0.25	3.0 ± 0.2	5.3 ± 0.2
BB-22 x 18	22.8 ± 0.4	18 ± 0.4	13.0 ± 0.25	3.0 ± 0.2	5.3 ± 0.3
OWD-28 x 20	28 ± 1.0	21.7 ± 1.5	16.9 ± 0.2	$3.85 + 0.6 - 0$	$5.0 + 0.3 - 0$
OWD-28 x 25	28 ± 1.0	26.7 ± 1.5	16.9 ± 0.2	$3.85 + 0.6 - 0$	$5.0 + 0.3 - 0$
BB-35 x 25	35 ± 0.8	$25 + 0.7 - 0.4$	20 ± 0.3	4.0 ± 0.2	5.3 ± 0.3
BB-40 x 25	40 ± 1.0	$25 + 0.7 - 0.4$	20 ± 0.3	4.0 ± 0.2	5.1 ± 0.3
BB-40 x 30	40 ± 1.0	$30 + 0.8 - 0.4$	20 ± 0.3	4.0 ± 0.2	5.1 ± 0.3
OWD-45 x 35	45 ± 1.5	35 ± 1.5	$27 + 0.35 - 0.7$	4.5 ± 0.2	6.3 ± 0.2
BB-50x30	$50 + 1.0 - 0.8$	$30 + 0.8 - 0.4$	$25 + 0.35$	5.0 ± 0.25	5.4 ± 0.2
OWD-56x35	56 ± 1.5	35 ± 1.5	32.85 ± 0.5	5.0 ± 0.2	6.3 ± 0.2

Bobbin Type Choke Cores

Data sheet Ref: APS-5 (12/04/02)

PACE
POWER MAGNETICS
DIVISION



Power Magnetics

10 Balmer Cut,
Buckingham Industrial Park,
Buckingham MK18 1UL

T 01280 817243

F 01280 823167

E sales@powermagnetics.co.uk
www.powermagnetics.co.uk

A DIVISION OF
PACE
COMPONENTS
LIMITED