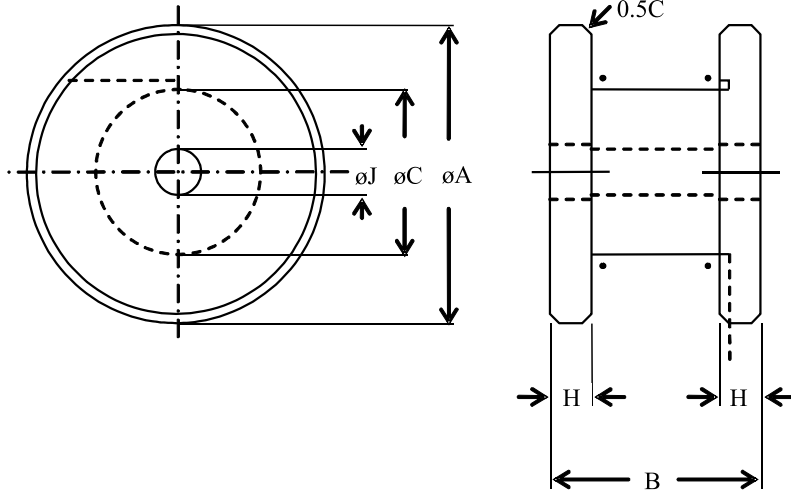


Large Bobbin Cores



| Type | ϕA | B | ϕC | H | ϕJ |
|-------------|--------------------|--------------------|---------------------|--------------------|-------------------|
| BB-22 x 14 | 22.8 ± 0.4 | 14.0 ± 0.35 | 13.0 ± 0.25 | 3.0 ± 0.2 | 5.3 ± 0.2 |
| BB-23 x 15 | 23 ± 0.4 | 15 ± 0.4 | 13.0 ± 0.25 | 3.0 ± 0.2 | 5.3 ± 0.2 |
| BB-22 x 18 | 22.8 ± 0.4 | 18 ± 0.4 | 13.0 ± 0.25 | 3.0 ± 0.2 | 5.3 ± 0.3 |
| OWD-28 x 20 | 28 ± 1.0 | 21.7 ± 1.5 | 16.9 ± 0.2 | $3.85^{+0.6}_{-0}$ | $5.0^{+0.3}_{-0}$ |
| OWD-28 x 25 | 28 ± 1.0 | 26.7 ± 1.5 | 16.9 ± 0.2 | $3.85^{+0.6}_{-0}$ | $5.0^{+0.3}_{-0}$ |
| BB-35 x 25 | 35 ± 0.8 | $25^{+0.7}_{-0.4}$ | 20 ± 0.3 | 4.0 ± 0.2 | 5.3 ± 0.3 |
| BB-40 x 25 | 40 ± 1.0 | $25^{+0.7}_{-0.4}$ | 20 ± 0.3 | 4.0 ± 0.2 | 5.1 ± 0.3 |
| BB-40 x 30 | 40 ± 1.0 | $30^{+0.8}_{-0.4}$ | 20 ± 0.3 | 4.0 ± 0.2 | 5.1 ± 0.3 |
| OWD-45 x 35 | 45 ± 1.5 | 35 ± 1.5 | $27^{+0.35}_{-0.7}$ | 4.5 ± 0.2 | 6.3 ± 0.2 |
| BB-50x30 | $50^{+1.0}_{-0.8}$ | $30^{+0.8}_{-0.4}$ | $25^{+0.35}$ | 5.0 ± 0.25 | 5.4 ± 0.2 |
| OWD-56x35 | 56 ± 1.5 | 35 ± 1.5 | 32.85 ± 0.5 | 5.0 ± 0.2 | 6.3 ± 0.2 |

Bobbin Type Choke Cores

Data sheet Ref: APS-5 (12/04/02)

PACE
POWER MAGNETICS
DIVISION



Power Magnetics

10 Balmer Cut,
Buckingham Industrial Park,
Buckingham MK18 1UL

T 01280 817243

F 01280 823167

E sales@powermagnetics.co.uk
www.powermagnetics.co.uk

A DIVISION OF
PACE
COMPONENTS
LIMITED